

JC-60 JC-60A R&P**SERVICE NOTES**

Applicable to following serial number:

**JC-60 787100 ~
JC-60A R&P 810530 ~***Fourth Edition***SPECIFICATIONS**

OUTPUT POWER -----	22V RMS	into	8-ohm		
INPUT SENSITIVITY ----	HIGH	LOW	MAIN IN	700mV	@ 1kHz
	15mV	44mV			@ 1kHz
	30mV				@ 100Hz
	9mV				@ 10kHz
INPUT IMPEDANCE -----	220k-ohm	82k-ohm	MAIN IN	68k-ohm	@ 1kHz
LINE OUTPUT -----	Level	50mV	IMPEDANCE	100-ohm	@ 1kHz
RESIDUAL NOISE -----	9 -- 20mV	(varies with controls setting)			
TONE CONTROL RANGE ---	TREBLE 37dB @ 10kHz	BASS 16dB		@ 100Hz	
	MIDDLE 1.5dB @ 1kHz	BRIGHT 4dB		@ 10kHz	
		(VOL at center)			
POWER CONSUMPTION ----	250VA				
DIMENSIONS -----	JC-60	600Wx480Hx255Dmm (23.6 x 18.9 x 10 in)			
	JC-60A R&P	624Wx530Hx255Dmm (24.5 x 20.9 x 10 in)			
WEIGHT -----	JC-60	20kg(44 lbs)	JC-60A R&P	26kg (57 lbs)	

JC-60A R&PCHASSIS REMOVAL
SCREWS

5 x 45mm truss

Switch SLR-022
(001-266)Badge No.27
(logo)
(074-027)Cabinet No.132
(081-132)

Speaker C-1230 (30-745A) (041-032)

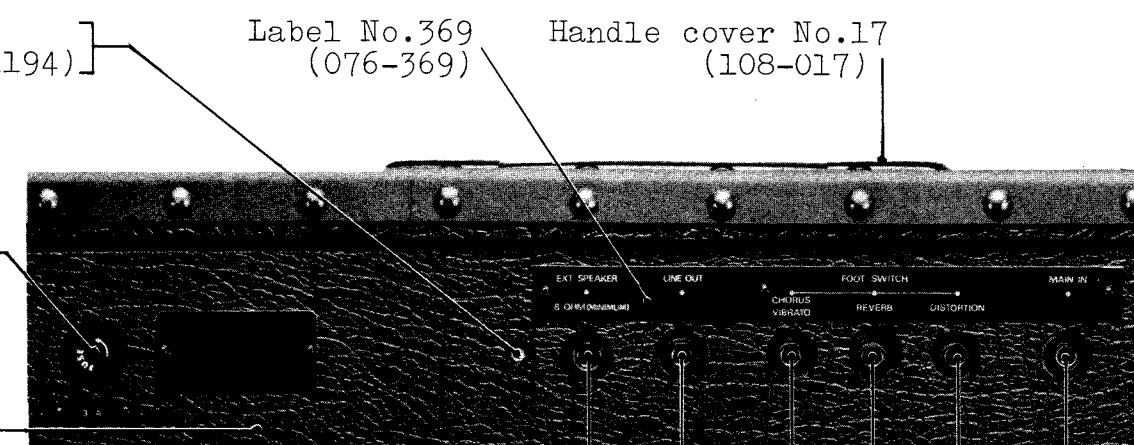
Badge No.28 R&P (074-028)

Roland

Printed in Japan

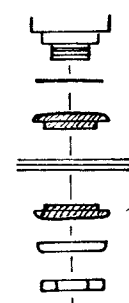
1

PARTS COMMON to TWO MODELS are shown only once rather than being shown in each photograph.

Potentiometer
V16L4N10SB10K (028-1194)Label No.369
(076-369)Handle cover No.17
(108-017)Fuse holder
SN-2059 (012-020)
Fuse MGC 3A
(008-007) 100/117V
SN-2250 (012-019)
Fuse CEE 2AT
(008-070) 220/240VBackboard
No.69 (089-069)

Jacks TJ-241-2 (009-004)

Jack SG7615 #5 (009-001)



CAUTION: When replacing INPUT jacks on front or EXT SPEAKER jack, use insulating bushings, otherwise hum or undesirable tone coloration may occur.

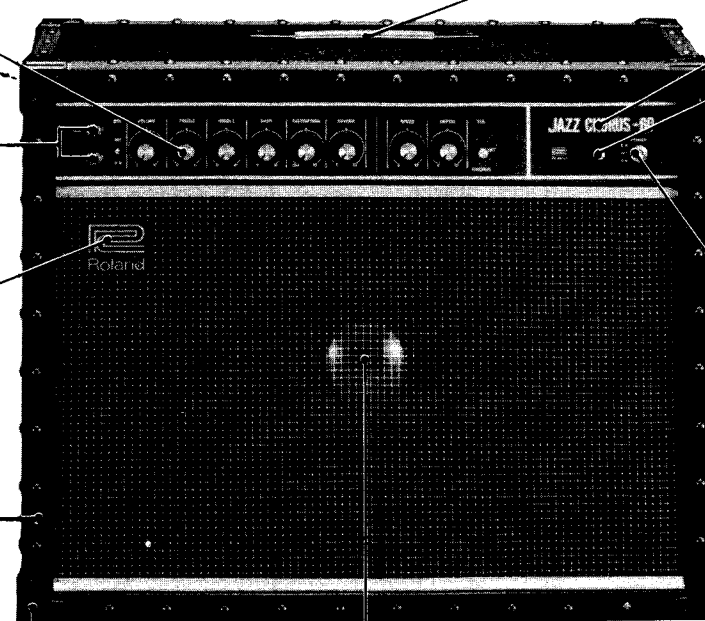
JC-60Knob No.60
(016-060)

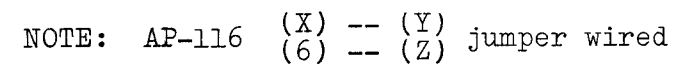
5 x 35mm truss

Jack SG7615 #5
(009-001)Badge No.11
(074-011)
logo typeCabinet No.126
(081-126)

Corner protector No.117 (065-117)

Speaker 30-103D (041-019)

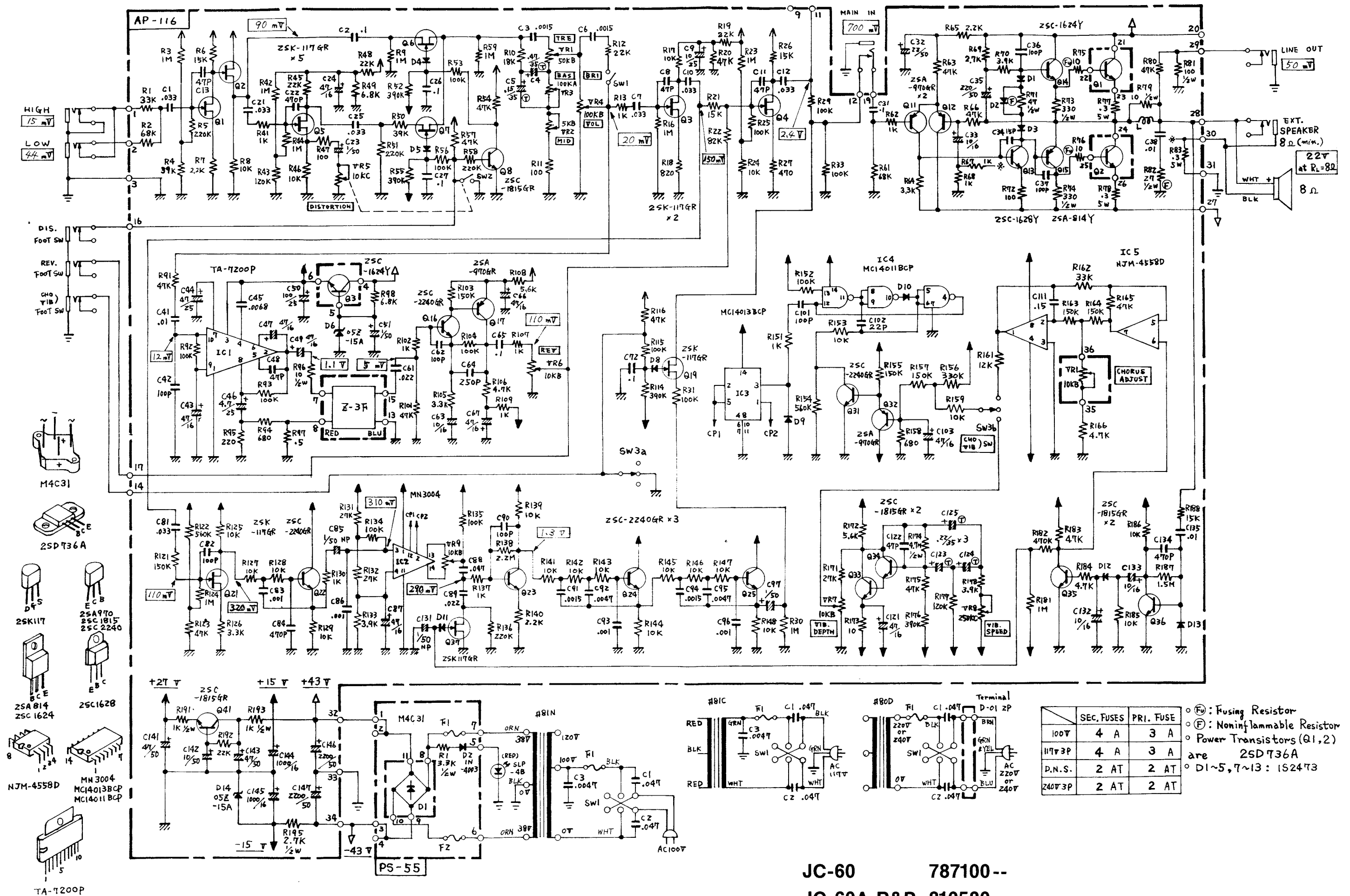
Handle H-20
(108-015)Panel No.269
(072-269)LED w/lens
SLP-4B
(019-014)Switch
MS239 6P
(001-218)
100VS-7B-7
(001-235)
117VWD13129
(001-019)
220/240V



VIBRATO OSCILLATOR Frequency

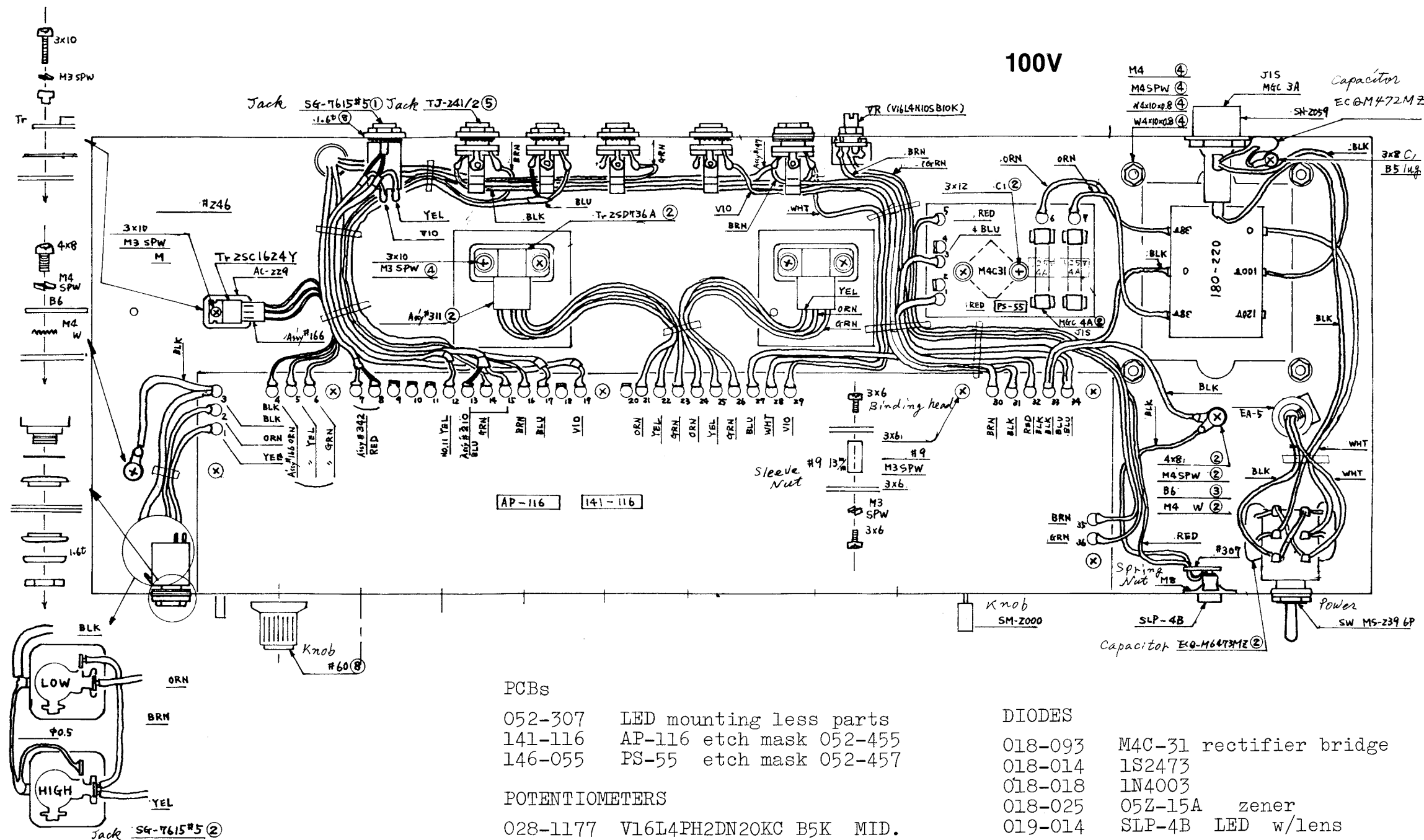
25V pp

at Q33 C 1.8 - 9Hz



JC-60 787100--

JC-60A R&P 810530--



PARTS LIST

JC-60

- 081-126 Cabinet no.126
- 108-015 Handle H-20
- 074-011 Badge no.11 logo
- 072-269 Panel no.269
- 131-067 Vinyl cover no.67
- 041-019 Speaker 30-103D

JC-60A R&P

- 081-132 Cabinet no.132
- 108-106 Handle H-30
- 074-027 Badge no.27 logo
- 074-028 Badge no.28 R&P
- 072-085B Panel no.85B
- 131-097 Vinyl cover no.97
- 041-032 Speaker C-1230(30-745A)

- 089-069 Backboard no.69
- 108-017 Handle cover no.17
- 061-246 Chassis no.246
- 048-073 Heat sink no.73 2SD736A
- 053-311 Connector assy no.311 2SD736A
- 053-166 Connector assy no.166 Reverb 2SC1624
- 040-001 Reverb unit Z-3F
- 120-009 Sleeve nut no.9 3x13mm
- 121-017 Spring nut M8 P LED
- 047-025 Line cord strain relief EA-5
- 009-001 Jack SG7615 #5
- 009-004 Jack TJ-241-2
- 016-060 Knob no.60 rotary
- 016-047 Knob SM2000 lever

POWER TRANSFORMER

- 022-081 PT no.81 100V
- 022-081C PT no.81C 117V
- 022-081D PT no.81D 220/240V

SWITCHES

- 001-218 MS239 6P power 100V
- 001-235 S-7B-7 power 117V
- 001-019 WD13129 power 220/240V
- 001-266 SLR-022 lever BRI.
- 001-267 ESL-3653 lever VIB/CHO

FUSES, FUSE HOLDERS

- 008-007 MGC 3A prim. 100/117V
- 008-008 MGC 4A sec. 100/117V
- 008-070 CEE 2AT 220/240V
- 012-020 Holder SN2059 100/117V
- 012-019 Holder SN2250 220/240V
- 012-029 Clip SN5054 sec.

* Resistor of 1/4w, mylar and ordinary electrolytic capacitor are omitted.